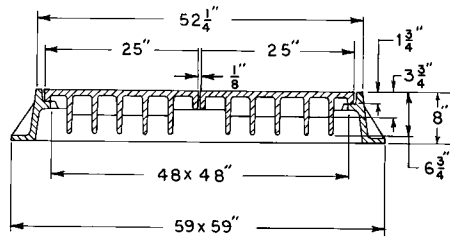
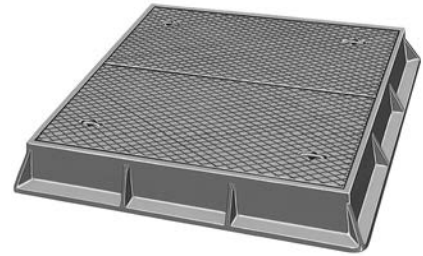


■ Note: When specifying/ordering grates, refer to "Choosing the Proper Inlet Grate" on pages 125-126.
 For a complete listing of FREE OPEN AREAS and WEIR PERIMETERS of all NEENAH grates, refer to pages 327-332.

R-3499
Airport Utility Frame, Ductile Iron Cover



Available with Type C Grate.



Lids are bolted to frame.

R-3599-B
Airport Slotted Vane Drain

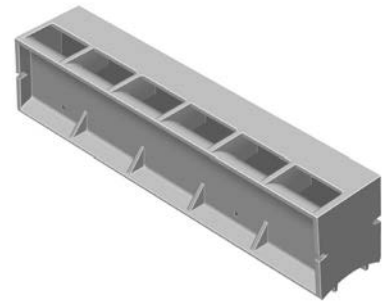
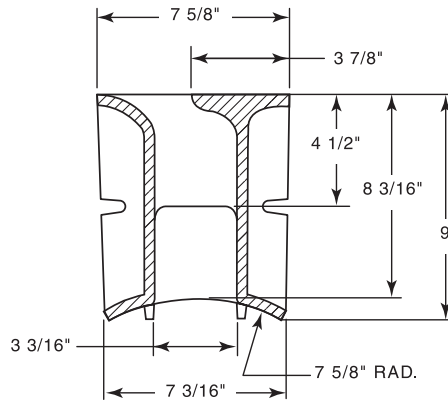
CATALOG NUMBER	GRATE TYPE	SQ. FT. OPEN	WEIR PERIMETER LINEAL FEET
R-3599-B	L	0.2	2 per ft.

Neenah's Cast Iron Slotted Vane Drain offers ease of installation, along with the superior vaned configuration to capture previously unexpected quantities of water when placed perpendicular to the flow. Installation is accomplished by sawing a slot in the top of conventional PVC pipe, placing the pipe on grade, installing the Cast Iron Slotted Vane Drain in place and pouring the concrete. When used in conjunction with a vane grate inlet, virtually all the surface water that would normally bypass the catch basin, can be captured. This permits the spacing between inlets to be increased.

An additional benefit is the added safety factor obtained should the catch basin be plugged or covered with snow. The unit may also be installed wherever sheet flow capture is required.

Slotted vane drains shown are allowed per FAA Advisory Circular AC 150/5370-10A Change 11.

For installation information, refer to **R-3599-A**.



AIRPORT CASTINGS
4

Supplied By:



877-903-7246

www.trenchdrainsupply.com

